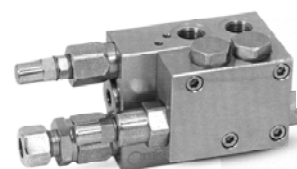


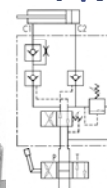
VALVOLE OLEODINAMICHE HYDRAULIC VALVES HYDRAULIKVENTILE

VALVOLA DI RIBALTAMENTO ARATRO + VMP PLOUGH OVERTURNING VALVES + RF - PFLUGWENDEVENTIL + DBV

CODICE Code Bestell-Nr.	Filetto Thread Gewinde	Inversion Pressure Max bar	W.P. Max bar	TIPO Type Typ	Kg.	EURO
V1867.0350	3/8"	250	400	VRAP 60/80 DE+VMP	3,20	227,01
V1867.0360	3/8"	250	400	VRAP 80/100 DE+VMP	3,19	227,01
V1867.0376	3/8"	250	400	VRAP 100/110 DE+VMP	3,19	230,00
V1867.0380	3/8"	250	400	VRAP 110/130 DE+VMP	3,16	237,44



**VRAP DE
+VMP**

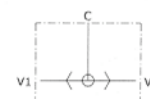
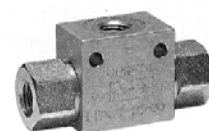


DOPPIO EFFETTO - DOUBLE ACTING - DOPPELWIRKEND
MONTAGGIO SU CILINDRO
CYLINDER MOUNTING - MONTAGE AM ZYLINDER

ACCIAIO - STEEL - STAHL

VALVOLA DI COMMUTAZIONE SHUTTLE VALVE - WECHSELVENTIL

CODICE Code Bestell-Nr.	Filetto Thread Gewinde	Q Max l/min.	P Max bar	TIPO Type Typ	Kg.	EURO
VSG390.100000	1/4"	20	500	VU/SF 010	0,27	17,44
VSG390.200000	3/8"	45	500	VU/SF 020	0,47	21,06
VSG390.300000	1/2"	80	500	VU/SF 030	0,74	26,72
VSG390.400000	3/4"	110	350	VU/SF 040	1,41	53,85
VSG390.500000	1"	150	300	VU/SF 050	1,87	74,53



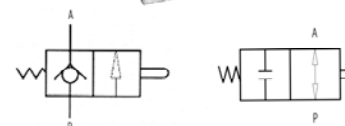
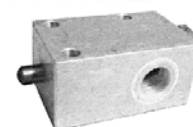
VU/SF

MONTAGGIO IN LINEA
LINE MOUNTING - REIHENMONTAGE

ACCIAIO - STEEL - STAHL

VALVOLA DI FINE CORSA END-STROKE VALVE - HUBBEGRENZUNGVENTIL

CODICE Code Bestell-Nr.	Filetto Thread Gewinde	Q Max l/min.	P Max bar	TIPO Type Typ	Kg.	EURO
NORMALMENTE CHIUSO - NORMALLY CLOSED - GESCHLOSSENE RUHESTELLUNG						
V7015.0600	3/8"	40	350	FC V-101 NC	0,96	88,71
V7015.0800	1/2"	60	350	FC V-121 NC	0,93	91,61
V7015.1200	3/4"	100	350	FC V-201 NC	1,86	123,09
NORMALMENTE APERTO - NORMALLY OPEN - OFFENE RUHESTELLUNG						
V7090.0817	3/8"	35	350	FC V-101 NA	1,24	95,44
V7090.0818	1/2"	50	350	FC V-121 NA	1,38	98,55



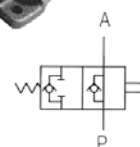
**FCV...NA
FCV...NC**

MONTAGGIO IN LINEA
LINE MOUNTING - REIHENMONTAGE

ACCIAIO - STEEL - STAHL

VALVOLA DI FINE CORSA END-STROKE VALVE - HUBBEGRENZUNGVENTIL

CODICE Code Bestell-Nr.	Filetto Thread Gewinde	Q Max l/min.	P Max bar	TIPO Type Typ	Kg.	EURO
NORMALMENTE APERTO - NORMALLY OPEN - OFFENE RUHESTELLUNG						
V7090.0824	3/8"	60	350	FCR-1T 60-NA 38	1,63	89,55
V7090.0826	1/2"	80	350	FCR-1T 80-NA 12	1,62	92,49
V7090.1200	3/4"	120	350	FCR-1T120-NA 34	2,12	193,77



FCR-1T NA

MONTAGGIO IN LINEA
LINE MOUNTING - REIHENMONTAGE

GHISA - CAST IRON - GUSS

VALVOLE OLEODINAMICHE

HYDRAULIC VALVES

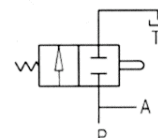
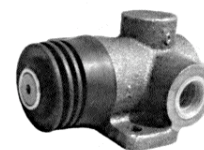
HYDRAULIKVENTILE

VALVOLA DI FINE CORSA

END-STROKE VALVE - HUBBEGRENZUNGSVENTIL

FCR-2T NC

CODICE Code Bestell-Nr.	Filetto Thread Gewinde	Q Max l/min.	P Max bar	TIPO Type Typ	Kg.	EURO
NORMALMENTE CHIUSO - NORMALLY CLOSED - GESCHLOSSENE RUHESTELLUNG						
V7090.0820	3/8"	60	350	FCR-2T 60-NC 38	1,65	85,01
V7090.0822	1/2"	80	350	FCR-2T 80-NC 12	1,65	86,82
V7090.0823	3/4"	120	350	FCR-2T120-NA 34	2,20	182,80



GHISA - CAST IRON - GUSS

MONTAGGIO IN LINEA
LINE MOUNTING - REIHENMONTAGE

COLLETTORE PER VALVOLA "VUBA"

"VUBA" VALVE ADAPTER - GEHÄUSE FÜR "VUBA" VENTILE

CMF-CFF

CODICE Code Bestell-Nr.	Filetto Thread Gewinde	P Max bar	TIPO Type Typ	Kg. x 100	EURO
MASCHIO-FEMMINA		MALE-FEMALE		AUSSEN-INNENGEWINDE	
VCG391.100000	1/4"	300	CMFxVUBA-010	7,00	1,79
VCG391.200000	3/8"	300	CMFxVUBA-020	9,50	2,50
VCG391.300000	1/2"	300	CMFxVUBA-030	14,70	3,08
VCG391.400000	3/4"	300	CMFxVUBA-040	22,50	8,53
VCG391.500000	1"	300	CMFxVUBA-050	42,50	12,07
FEMMINA-FEMMINA		FEMALE-FEMALE		INNEN-INNENGEWINDE	
VCG392.100000	1/4"	300	CFFxVUBA-010	7,00	2,83
VCG392.200000	3/8"	300	CFFxVUBA-020	9,80	4,08
VCG392.300000	1/2"	300	CFFxVUBA-030	14,50	4,74
VCG392.400000	3/4"	300	CFFxVUBA-040	22,20	8,20
VCG392.500000	1"	300	CFFxVUBA-050	43,50	11,99



ACCIAIO - STEEL - STAHL

COLLETTORE PER VALVOLA "VRD"

"VRD" VALVE ADAPTER - GEHÄUSE FÜR "VRD" VENTILE

CMF-CFF

CODICE Code Bestell-Nr.	Filetto Thread Gewinde	P Max bar	TIPO Type Typ	Kg. x 100	EURO
MASCHIO-FEMMINA		MALE-FEMALE		AUSSEN-INNENGEWINDE	
VCG502.200000	3/8"	300	CMFxVRD 020	11,00	6,41
VCG502.300000	1/2"	300	CMFxVRD 030	16,50	7,37
VCG502.400000	3/4"	300	CMFxVRD 040	25,00	9,49
FEMMINA-FEMMINA		FEMALE-FEMALE		INNEN-INNENGEWINDE	
VCG503.200000	3/8"	300	CFFxVRD 020	11,00	6,74
VCG503.300000	1/2"	300	CFFxVRD 030	16,50	7,74
VCG503.400000	3/4"	300	CFFxVRD 040	25,00	9,49



ACCIAIO - STEEL - STAHL

COLLETTORE PER VALVOLA "VSC"

"VSC" VALVE ADAPTER - GEHÄUSE FÜR "VSC" VENTILE

CMF-CFF

CODICE Code Bestell-Nr.	Filetto Thread Gewinde	P Max bar	TIPO Type Typ	Kg. x 100	EURO
MASCHIO-FEMMINA		MALE-FEMALE		AUSSEN-INNENGEWINDE	
VCG506.100000	1/4"	300	CMFxVSC 010	7,00	2,58
VCG506.200000	3/8"	300	CMFxVSC 020	9,50	3,12
FEMMINA-FEMMINA		FEMALE-FEMALE		INNEN-INNENGEWINDE	
VCG507.100000	1/4"	300	CFFxVSC 010	8,00	4,20
VCG507.200000	3/8"	300	CFFxVSC 020	11,00	4,95



ACCIAIO - STEEL - STAHL