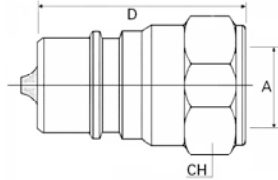


**ACCESSORI**  
ACCESSORIES  
ZUBEHÖRE

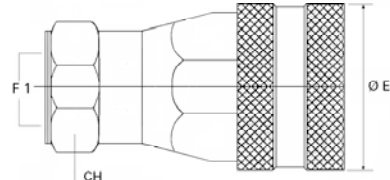
**INNESTO RAPIDO A VALVOLA - TIPO "MBV"**  
VALVE QUICK COUPLINGS "MBV" TYPE  
SCHNELLKUPPLUNG MIT KEGELVENTIL - TYP "MBV"

**Maschio - Male - Stecker ISO 7241-A**



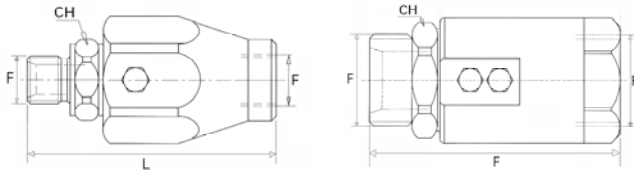
CODICE Code Bestell-Nr.	F1	P Max bar	L	CH	Kg.	EURO
AIM8000400	1/4"	350	35	19	0,05	4,41
AIM8000600	3/8"	315	39	22	0,06	4,62
AIM8000800	1/2"	175	46	27	0,09	4,81
AIM8001200	3/4"	250	54	34	0,19	10,23

**Femmina - Female - Muffe ISO 7241-A**



CODICE Code Bestell-Nr.	F1	P Max bar	L	CH	Kg.	EURO
AIF8000400	1/4"	350	47	19	0,08	9,10
AIF8000600	3/8"	315	58	24	0,15	9,54
AIF8000800	1/2"	250	67	30	0,27	11,73
AIF8001200	3/4"	250	81	38	0,47	23,42

**GIUNTI GIREVOLI IN LINEA**  
IN LINE ROTARY COUPLING  
REIHENDREHGELENKE



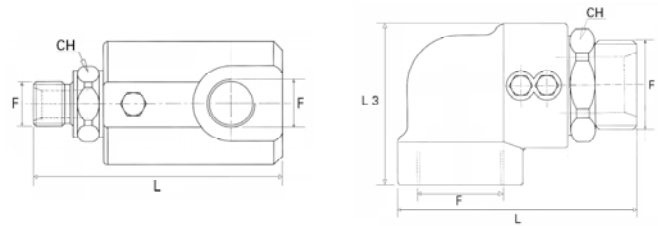
1/4" - 3/8" - 1/2" - 3/4"

1" - 1.1/4"

CODICE Code Bestell-Nr.	F	P Max bar	L	CH	Kg.	EURO
AGG0400000	1/4"	200	61	19	0,21	15,46
AGG0600000	3/8"	200	66	24	0,27	16,90
AGG0800000	1/2"	150	71	27	0,34	19,71
AGG1200000	3/4"	150	80	34	0,55	31,01
AGG1600000	1"	100	90	41	0,91	42,62
AGG2000000	1.1/4"	100	101	50	1,10	66,92

P MAX= PRESSIONE MAX IN ROTAZIONE - MAX ROTATION PRESSURE -  
MAX. ROTATIONSDRUCK

**GIUNTI GIREVOLI A 90°**  
90° ROTARY COUPLING  
DREHGELENKE 90°



1/4" - 3/8" - 1/2" - 3/4" - 1"

1.1/4"

CODICE Code Bestell-Nr.	F	P Max bar	L	CH	Kg.	EURO
AGG9040000	1/4"	200	69	19	0,31	17,35
AGG9060000	3/8"	200	76	24	0,42	19,69
AGG9080000	1/2"	150	87	27	0,52	23,62
AGG9120000	3/4"	150	100	34	0,90	39,92
AGG9160000	1"	100	113	41	1,12	53,95
AGG9200000	1.1/4"	100	121	50	1,75	102,12

P MAX= PRESSIONE MAX IN ROTAZIONE - MAX ROTATION PRESSURE -  
MAX. ROTATIONSDRUCK