

VALVOLE OLEODINAMICHE

HYDRAULIC VALVES

HYDRAULIKVENTILE

VALVOLA A PARACADUTE

BURST VALVE - ROHRBRUCHSICHERUNGSVENTIL

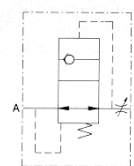
VUBA

CODICE Code Bestell-Nr.	Filetto Thread Gewinde	Q Max l/min.	P Max bar	S	TIPO Type Typ	Kg. x 100	EURO
VCG390.100800	1/4"	25	350	0,8	VUBA 010	1,00	8,41
VCG390.201500	3/8"	45	350	1,5	VUBA 020	1,00	9,03
VCG390.301800	1/2"	70	350	1,8	VUBA 030	3,00	9,57
VCG390.402200	3/4"	140	350	2,2	VUBA 040	5,00	12,28
VCG390.502600	1"	180	350	2,6	VUBA 050	10,00	15,73

S = Apertura standard
Standard opening
Standardöffnung

COLLETTORE - VALVE ADAPTER - GEHÄUSE: VEDI PAG. 22 - SEE PAGE 22 - SIEHE SEITE 22

ACCIAIO - STEEL - STAHL



CARTUCCIA - CARTRIDGE - PATRONE
SUPERFICI DI TENUTA LAPPATE
LAPPED TIGHT SURFACES
GELÄPPTEN DICHTFLÄCHEN

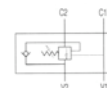
VALVOLA DI BLOCCO E CONTROLLO DISCESA

OVERCENTER VALVE - SENKBREMSVENTIL

VBCD/A SE(DE)-FLV

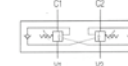
CODICE Code Bestell-Nr.	Filetto Thread Gewinde	Q Max l/min.	W.P. Max bar	PILOT RATIO	TIPO Type Typ	Kg.	EURO
SEMPLICE EFFETTO - SINGLE ACTING - EINFACHWIRKEND							
V2190.0392FLV	3/8"	40	350	1:4,5	VBCD/A-SE-FLV 3/8"		89,09
V2190.0412FLV	1/2"	60	350	1:4,5	VBCD/A-SE-FLV 1/2"		93,42

VBCD/A SE-FLV



CODICE Code Bestell-Nr.	Filetto Thread Gewinde	Q Max l/min.	W.P. Max bar	PILOT RATIO	TIPO Type Typ	Kg.	EURO
DOPPIO EFFETTO - DOUBLE ACTING - DOPPELWIRKEND							
V2290.0422FLV	3/8"	40	350	1:4,5	VBCD/A-DE-FLV 3/8"		145,53
V2290.0432FLV	1/2"	60	350	1:4,5	VBCD/A-DE-FLV 1/2"		153,01

VBCD/A DE-FLV



ACCIAIO - STEEL - STAHL

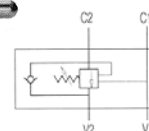
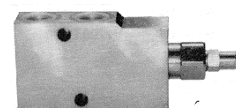
MONTAGGIO SU CILINDRO - CYLINDER MOUNTING - MONTAGE AM ZYLINDER

VALVOLA DI BLOCCO E CONTROLLO DISCESA

OVERCENTER VALVE - SENKBREMSVENTIL

VBCD/A SE

CODICE Code Bestell-Nr.	Filetto Thread Gewinde	Q Max l/min.	P Max bar	PILOT RATIO	TIPO Type Typ	Kg.	EURO
V2190.A600	3/8"	40	350	1:4,5	VBCD/A SE 3/8"	1,26	74,21
V2190.A800	1/2"	60	350	1:4,5	VBCD/A SE 1/2"	1,20	77,83
V2190.A120	3/4"	95	350	1:5,5	VBCD/A SE 3/4"	2,37	128,51



SEMPLICE EFFETTO
SINGLE ACTING - EINFACHWIRKEND
MONTAGGIO IN LINEA
LINE MOUNTING - REIHENMONTAGE

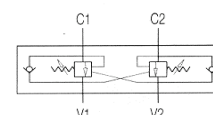
ACCIAIO - STEEL - STAHL

VALVOLA DI BLOCCO E CONTROLLO DISCESA

OVERCENTER VALVE - SENKBREMSVENTIL

VBCD/A DE

CODICE Code Bestell-Nr.	Filetto Thread Gewinde	Q Max l/min.	P Max bar	PILOT RATIO	TIPO Type Typ	Kg.	EURO
V2290.A600	3/8"	40	350	1:4,5	VBCD/A DE 3/8"	1,95	121,28
V2290.A800	1/2"	60	350	1:4,5	VBCD/A DE 1/2"	1,90	127,63
V2290.A120	3/4"	95	350	1:5,5	VBCD/A DE 3/4"	3,82	195,50



DOPPIO EFFETTO
DOUBLE ACTING - DOPPELWIRKEND
MONTAGGIO IN LINEA
LINE MOUNTING - REIHENMONTAGE

ACCIAIO - STEEL - STAHL