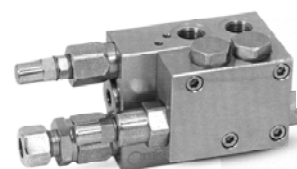


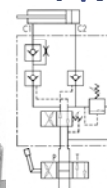
VALVOLE OLEODINAMICHE HYDRAULIC VALVES HYDRAULIKVENTILE

VALVOLA DI RIBALTAMENTO ARATRO + VMP PLOUGH OVERTURNING VALVES + RF - PFLUGWENDEVENTIL + DBV

CODICE Code Bestell-Nr.	Filetto Thread Gewinde	Inversion Pressure Max bar	W.P. Max bar	TIPO Type Typ	Kg.	EURO
V1867.0350	3/8"	250	400	VRAP 60/80 DE+VMP	3,20	227,01
V1867.0360	3/8"	250	400	VRAP 80/100 DE+VMP	3,19	227,01
V1867.0376	3/8"	250	400	VRAP 100/110 DE+VMP	3,19	230,00
V1867.0380	3/8"	250	400	VRAP 110/130 DE+VMP	3,16	237,44



**VRAP DE
+VMP**

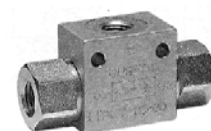


DOPPIO EFFETTO - DOUBLE ACTING - DOPPELWIRKEND
MONTAGGIO SU CILINDRO
CYLINDER MOUNTING - MONTAGE AM ZYLINDER

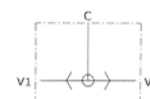
ACCIAIO - STEEL - STAHL

VALVOLA DI COMMUTAZIONE SHUTTLE VALVE - WECHSELVENTIL

CODICE Code Bestell-Nr.	Filetto Thread Gewinde	Q Max l/min.	P Max bar	TIPO Type Typ	Kg.	EURO
VSG390.100000	1/4"	20	500	VU/SF 010	0,27	17,44
VSG390.200000	3/8"	45	500	VU/SF 020	0,47	21,06
VSG390.300000	1/2"	80	500	VU/SF 030	0,74	26,72
VSG390.400000	3/4"	110	350	VU/SF 040	1,41	53,85
VSG390.500000	1"	150	300	VU/SF 050	1,87	74,53



VU/SF

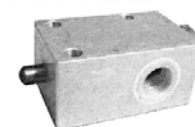


MONTAGGIO IN LINEA
LINE MOUNTING - REIHENMONTAGE

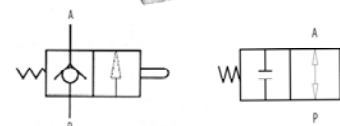
ACCIAIO - STEEL - STAHL

VALVOLA DI FINE CORSA END-STROKE VALVE - HUBBEGRENZUNGVENTIL

CODICE Code Bestell-Nr.	Filetto Thread Gewinde	Q Max l/min.	P Max bar	TIPO Type Typ	Kg.	EURO
NORMALMENTE CHIUSO - NORMALLY CLOSED - GESCHLOSSENE RUHESTELLUNG						
V7015.0600	3/8"	40	350	FC V-101 NC	0,96	88,71
V7015.0800	1/2"	60	350	FC V-121 NC	0,93	91,61
V7015.1200	3/4"	100	350	FC V-201 NC	1,86	123,09
NORMALMENTE APERTO - NORMALLY OPEN - OFFENE RUHESTELLUNG						
V7090.0817	3/8"	35	350	FC V-101 NA	1,24	95,44
V7090.0818	1/2"	50	350	FC V-121 NA	1,38	98,55



**FCV...NA
FCV...NC**



MONTAGGIO IN LINEA
LINE MOUNTING - REIHENMONTAGE

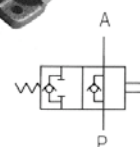
ACCIAIO - STEEL - STAHL

VALVOLA DI FINE CORSA END-STROKE VALVE - HUBBEGRENZUNGVENTIL

CODICE Code Bestell-Nr.	Filetto Thread Gewinde	Q Max l/min.	P Max bar	TIPO Type Typ	Kg.	EURO
NORMALMENTE APERTO - NORMALLY OPEN - OFFENE RUHESTELLUNG						
V7090.0824	3/8"	60	350	FCR-1T 60-NA 38	1,63	89,55
V7090.0826	1/2"	80	350	FCR-1T 80-NA 12	1,62	92,49
V7090.1200	3/4"	120	350	FCR-1T120-NA 34	2,12	193,77



FCR-1T NA



MONTAGGIO IN LINEA
LINE MOUNTING - REIHENMONTAGE

GHISA - CAST IRON - GUSS