

# VALVOLE OLEODINAMICHE

## HYDRAULIC VALVES

## HYDRAULIKVENTILE

### VALVOLA LIMITATRICE DI PRESSIONE

#### RELIEF VALVE

#### DRUCKBEGRENZUNGSVENTIL

VMDC

CODICE Code Bestell-Nr.	Filetto Thread Gewinde	Q Max l/min.	P Max bar	TIPO Type Typ	Kg.	EURO
VCS001.020B10	SAE 8	20	350	VMDC 20-B1	0,05	21,77
MOLLA - SPRING - FEDER: A= 5:100bar - B=10:200bar (standard) - C=20:350bar						
VCM001.035B10	M20x1,5	35	350	VMDC 35-B1	0,16	21,35
MOLLA - SPRING - FEDER: A= 5:50bar - B=40:210bar (standard) - C=100:350bar						
VCM001.080B10	M26x1,5	80	260	VMDC 80-B1	0,33	28,84
MOLLA - SPRING - FEDER: B=20:260bar						

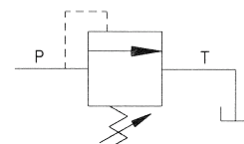
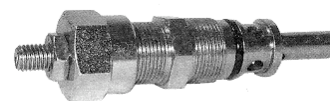
REGOLAZIONE - SETTING - EINSTELLUNG

1 = VITE - SCREW - SCHRAUBE (STANDARD)

2 = VOLANTINO - KNOB - HANDRAD

3 = VITE+CAPPELLOTTA - SCREW+PROTECTION CUP - SCHRAUBE+SCHUTZKAPPE

ACCIAIO - STEEL - STAHL



CARTUCCIA - CARTRIDGE - PATRONE

### VALVOLA LIMITATRICE DI PRESSIONE

#### RELIEF VALVE

#### DRUCKBEGRENZUNGSVENTIL

VMD

CODICE Code Bestell-Nr.	Filetto Thread Gewinde	Q Max l/min.	P Max bar	TIPO Type Typ	Kg.	EURO
VAG002.0210B1	1/4"	20	350	VMD 20-010-B1	0,27	34,46
VAG002.0220B1	3/8"	20	350	VMD 20-020-B1	0,27	34,46
MOLLA - SPRING - FEDER: A= 5:100bar - B=10:250bar (standard) - C=20:350bar						
VAG002.0320B1	3/8"	35	350	VMD 35-020-B1	0,40	40,49
VAG002.0330B1	1/2"	35	350	VMD 35-030-B1	0,39	40,49
MOLLA - SPRING - FEDER: A= 5:50bar - B=40:210bar (standard) - C=100:350bar						
VAG002.0830B1	1/2"	80	260	VMD 80-030-B1	0,72	53,89
VAG002.0840B1	3/4"	80	260	VMD 80-040-B1	0,70	54,10
MOLLA - SPRING - FEDER: B=20:260bar						

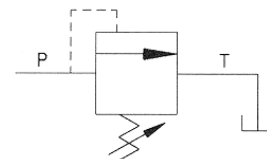
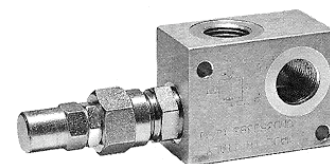
REGOLAZIONE - SETTING - EINSTELLUNG

1 = VITE - SCREW - SCHRAUBE (STANDARD)

2 = VOLANTINO - KNOB - HANDRAD

3 = VITE+CAPPELLOTTA - SCREW+PROTECTION CUP - SCHRAUBE+SCHUTZKAPPE

ALLUMINIO - ALUMINIUM



CARTUCCIA+CORPO

CARTRIDGE+BODY - PATRONE+KÖRPER

MONTAGGIO IN LINEA

LINE MOUNTING - REIHENMONTAGE

### VALVOLA ANTIURTO DOPPIA

#### DUAL CROSS-OVER RELIEF VALVE

#### SCHOCKVENTIL DOPPELTWIRKEND

VMDI

CODICE Code Bestell-Nr.	Filetto Thread Gewinde	Q Max l/min.	P Max bar	TIPO Type Typ	Kg.	EURO
VAG021.0320B1	3/8"	35	350	VMDI 35-020-B1	0,79	81,57
VAG021.0330B1	1/2"	35	350	VMDI 35-030-B1	0,79	81,57
MOLLA - SPRING - FEDER: A= 5:50bar - B=40:210bar (standard) - C=100:350bar						
VAG021.0830B1	1/2"	80	260	VMDI 80-030-B1	1,65	117,15
VAG021.0840B1	3/4"	80	260	VMDI 80-040-B1	1,65	117,15
MOLLA - SPRING - FEDER: B=20:260bar						

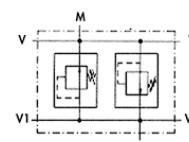
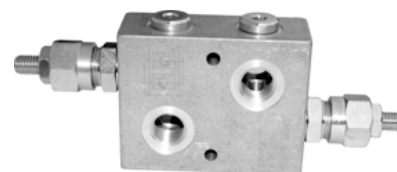
REGOLAZIONE - SETTING - EINSTELLUNG

1 = VITE - SCREW - SCHRAUBE (STANDARD)

2 = VOLANTINO - KNOB - HANDRAD

3 = VITE+CAPPELLOTTA - SCREW+PROTECTION CUP - SCHRAUBE+SCHUTZKAPPE

ALLUMINIO - ALUMINIUM



CARTUCCIA+CORPO

CARTRIDGE+BODY - PATRONE+KÖRPER

MONTAGGIO IN LINEA

LINE MOUNTING - REIHENMONTAGE

# VALVOLE OLEODINAMICHE

## HYDRAULIC VALVES

## HYDRAULIKVENTILE

### VALVOLA ANTIURTO DOPPIA

#### DUAL CROSS-OVER RELIEF VALVE

#### SCHOCKVENTIL DOPPELTWIRKEND

**VBDC**

CODICE Code Bestell-Nr.	Filetto Thread Gewinde	Q Max l/min.	P Max bar	TIPO Type Typ	Kg.	EURO
VAG022.0320B1	3/8"	35	350	VBDC 35-020-B1	0,80	77,74
VAG022.0330B1	1/2"	35	350	VBDC 35-030-B1	0,80	77,74

MOLLA - SPRING - FEDER: A= 5:50bar - B=40:210bar (standard) - C=100:350bar

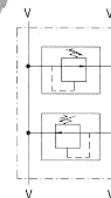
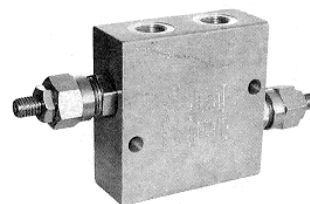
REGOLAZIONE - SETTING - EINSTELLUNG

1 = VITE - SCREW - SCHRAUBE (STANDARD)

2 = VOLANTINO - KNOB - HANDRAD

3 = VITE+CAPPELOTTO - SCREW+PROTECTION CUP - SCHRAUBE+SCHUTZKAPPE

ALLUMINIO - ALUMINIUM



CARTUCCIA+CORPO  
CARTRIDGE+BODY - PATRONE+KÖRPER  
MONTAGGIO IN LINEA  
LINE MOUNTING - REIHENMONTAGE

### VALVOLA LIMITATRICE DI PRESSIONE

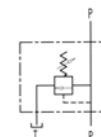
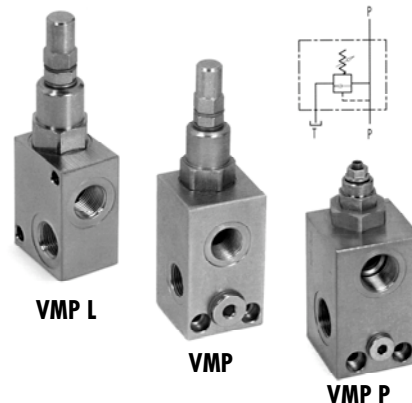
#### RELIEF VALVE

#### DRUCKBEGRENZUNGSVENTIL

**VMP**

CODICE Code Bestell-Nr.	Filetto Thread Gewinde	Q Max l/min.	P Max bar	TIPO Type Typ	Kg.	EURO
V0120.0003	1/4"	30	300	VMP 1/4" L C	0,48	27,15
V0120.0004	3/8"	40	300	VMP 3/8" L C	0,47	29,50
MOLLA - SPRING - FEDER: A=10:50 bar - C=10:180 bar (standard) - E=80:300 bar						
V0120.0006	3/8"	45	300	VMP 3/8" C	0,83	36,18
V0120.0008	1/2"	70	300	VMP 1/2" C	1,06	39,84
V0120.0012	3/4"	120	300	VMP 3/4" C	1,48	52,87
MOLLA - SPRING - FEDER: A=10:50 bar - B=20:100 - C=10:180 bar (standard) - D=50:250 - E=80:300 bar						
<b>PILOTATA - PILOT OPERATED - VORGESTEUELTE BETÄTIGUNG</b>						
V0120.3512	3/4"	120	350	VMPP 3/4" P	2,20	106,03
V0120.3516	1"	180	350	VMPP 1" P	3,00	122,84
MOLLA - SPRING - FEDER: N=20:200 bar - P=50:350 bar (standard)						

ACCIAIO - STEEL - STAHL



MONTAGGIO IN LINEA  
LINE MOUNTING - REIHENMONTAGE

### VALVOLA ANTIURTO DOPPIA

#### DUAL CROSS-OVER RELIEF VALVE

#### SCHOCKVENTIL DOPPELTWIRKEND

**VAU/DE**

CODICE Code Bestell-Nr.	Filetto Thread Gewinde	Q Max l/min.	P Max bar	TIPO Type Typ	Kg.	EURO
V0590.0438	1/4"	30	300	VAU/DE 1/4" C	0,99	51,94
V0590.0440	3/8"	45	300	VAU/DE 3/8" C	1,21	56,65
V0590.0450	1/2"	70	300	VAU/DE 1/2" C	1,15	60,98
V0590.0460	3/4"	110	300	VAU/DE 3/4" C	1,68	80,56

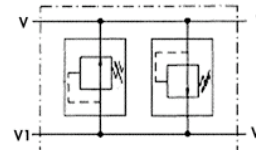
MOLLA - SPRING - FEDER:  
A=10:50bar - B=20:100bar - C=10:180bar(standard) - D=50:250bar - E=80:300bar

**PILOTATA - PILOT OPERATED - VORGESTEUELTE BETÄTIGUNG**

V0590.0470 1" 160 350 VAU/DE 1" C 2,03 226,68

MOLLA - SPRING - FEDER:  
N=20:200bar - P=50:350bar(standard)

ACCIAIO - STEEL - STAHL



MONTAGGIO IN LINEA  
LINE MOUNTING - REIHENMONTAGE

# VALVOLE OLEODINAMICHE

## HYDRAULIC VALVES

## HYDRAULIKVENTILE

### VALVOLA ANTIURTO PER MOTORI

#### CROSS LINE RELIEF VALVE FOR MOTORS

#### SCHOCKVENTIL FÜR MOTOREN

**VAU/DE**

CODICE Code Bestell-Nr.	Filetto Thread Gewinde	Q Max l/min.	P Max bar	TIPO Type Typ	Kg.	EURO
V0590.0500	1/2"	60	300	VAU/DE 1/2" C per OMP/R	1,76	72,74
V0590.0490	1/2"	60	300	VAU/DE 1/2" C per OMS	1,33	71,10
V0590.0505	3/4"	100	300	VAU/DE 3/4" C per OMT	1,92	86,82

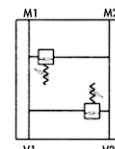
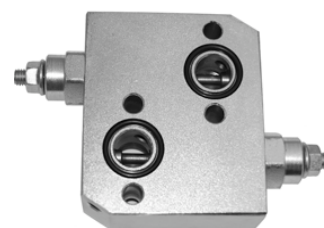
MOLLA - SPRING - FEDER:

A=10:50 bar - B=20:100 bar - C=10:180bar (standard) - D=50:250 bar - E=80:300 bar

**A RICHIESTA:  
ON REQUEST:  
AUF ANFRAGE:**

**SBLOCCO FRENO  
BRAKE RELEASE PORT  
BREMSENTSPERREN**

**VAU/DE/SF...**



MONTAGGIO IN LINEA  
LINE MOUNTING - REIHENMONTAGE

ACCIAIO - STEEL - STAHL

### VALVOLA DI SEQUENZA

#### SEQUENCE VALVE

#### DRUCKFOLGEVENTIL

**VS2C**

CODICE Code Bestell-Nr.	Filetto Thread Gewinde	Q Max l/min.	P Max bar	TIPO Type Typ	Kg.	EURO
V1390.0640	3/8"	35	350	VS2C 3/8" C	1,17	49,55
V1390.0660	1/2"	70	350	VS2C 1/2" C	1,20	59,76
V1390.0665	3/4"	110	350	VS2C 3/4" C	2,90	129,22

MOLLA - SPRING - FEDER:

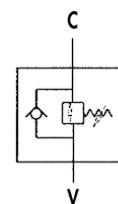
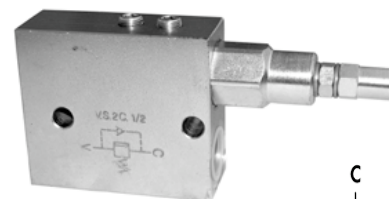
A=10:50 bar - B=20:100 bar - C=10:180bar (standard) - D=50:250 bar - E=80:300 bar

**CON ANNULLAMENTO PRESS. PRIMARIA  
WITH ZERO SETTING ON PRIMARY PRESSURE  
MIT NULLSTELLUNG DES PRIMÄRDRUCKS**

V1390.0642	3/8"	35	250	VSQAPP 3/8" C	1,25	69,84
V1390.0662	1/2"	60	250	VSQAPP 1/2" C	1,30	81,36

MOLLA - SPRING - FEDER:

A=10:50 bar - B=20:100 bar - C=10:180 bar (standard) - D=50:250 bar - E=80:300 bar



MONTAGGIO IN LINEA  
LINE MOUNTING - REIHENMONTAGE

ACCIAIO - STEEL - STAHL

### VALVOLA DI ESCLUSIONE ALTA-BASSA PRESSIONE

#### "HY-LOW" UNLOADING VALVE

#### ABSCHALTVENTIL

**VABP**

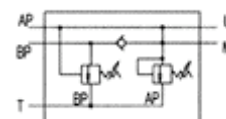
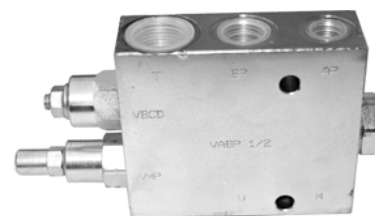
CODICE Code Bestell-Nr.	Filetto Thread Gewinde	Q Max l/min.	P Max bar	TIPO Type Typ	Kg.	EURO
V1290.0512	3/8"	40	300	VABP 3/8"	1,75	178,43
V1290.0513	1/2"	65	300	VABP 1/2"	2,33	246,22
V1290.0514	3/4"	100	300	VABP 3/4"	3,97	253,19

MOLLA "BP" - "BP" SPRING - FEDER "BP"

**B=20:120 bar (standard)**

MOLLA "AP" - "AP" SPRING - FEDER "AP"

**D=50:350 bar (standard)**



MONTAGGIO IN LINEA  
LINE MOUNTING - REIHENMONTAGE

ACCIAIO - STEEL - STAHL