

VALVOLE DIREZIONALI

HYDRAULIC DIRECTIONAL CONTROL VALVES

HYDRAULIKWEGEVENTILE

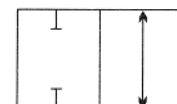
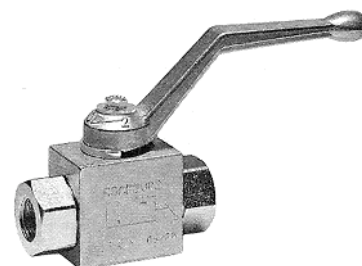
VALVOLA A SFERA A 2 VIE

2-WAY BALL VALVE

2-WEGE KUGELHAHN

RS 2

CODICE Code Bestell-Nr.	Filetto Thread Gewinde	Schema Scheme Schema	P Max bar	TIPO Type Typ	Kg.	EURO
DRS2040000	1/4"	--	500	RS 2 DN 6	0,49	20,21
DRS2060000	3/8"	--	500	RS 2 DN10	0,65	21,14
DRS2080000	1/2"	--	500	RS 2 DN13	0,75	23,58
DRS2120000	3/4"	--	400	RS 2 DN20	1,42	45,72
DRS2160000	1"	--	350	RS 2 DN25	2,20	55,81
DRS2200000	1.1/4"	--	350	RS 2 DN25	2,23	60,26
CORPO TONDO - ROUND BODY - RUNDGEHÄUSE						
* DRS2240000	1.1/2"		350	RS 2 DN40		146,54
* DRS2320000	2"		350	RS 2 DN50		201,76



* A RICHIESTA - ON REQUEST - AUF ANFRAGE
ACCIAIO - STEEL - STAHL

MONTAGGIO IN LINEA
LINE MOUNTING - REIHENMONTAGE

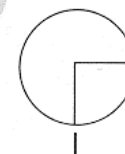
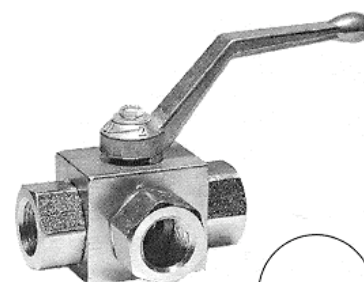
VALVOLA A SFERA A 3 VIE

3-WAY BALL VALVE

3-WEGE KUGELHAHN

RS 3/L

CODICE Code Bestell-Nr.	Filetto Thread Gewinde	Schema Scheme Schema	P Max bar	TIPO Type Typ	Kg.	EURO
DRS3040000	1/4"	L	400	RS 3/L DN 6	0,53	45,68
DRS3060000	3/8"	L	400	RS 3/L DN10	0,68	47,95
DRS3080000	1/2"	L	350	RS 3/L DN13	0,82	51,35
DRS3120000	3/4"	L	350	RS 3/L DN20	1,50	79,13
DRS3160000	1"	L	350	RS 3/L DN25	2,35	89,55
DRS3200000	1.1/4"	L	350	RS 3/L DN25	2,53	98,84
* DRS3240000	1.1/2"	L	350	RS 3/L DN40		474,11
* DRS3320000	2"	L	350	RS 3/L DN50		556,86



* A RICHIESTA - ON REQUEST - AUF ANFRAGE
ACCIAIO - STEEL - STAHL

MONTAGGIO IN LINEA
LINE MOUNTING - REIHENMONTAGE

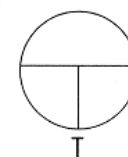
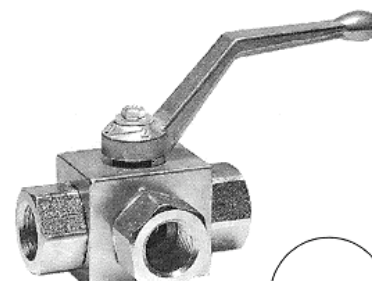
VALVOLA A SFERA A 3 VIE

3-WAY BALL VALVE

3-WEGE KUGELHAHN

RS 3/T

CODICE Code Bestell-Nr.	Filetto Thread Gewinde	Schema Scheme Schema	P Max bar	TIPO Type Typ	Kg.	EURO
DRST304000	1/4"	T	400	RS 3/T DN 6	0,53	51,61
DRST306000	3/8"	T	400	RS 3/T DN10	0,68	54,17
DRST308000	1/2"	T	350	RS 3/T DN13	0,82	58,04
DRST312000	3/4"	T	350	RS 3/T DN20	1,50	89,43
DRST316000	1"	T	350	RS 3/T DN25	2,35	101,19
DRST320000	1.1/4"	T	350	RS 3/T DN25	2,53	111,66
* DRST324000	1.1/2"	T	350	RS 3/T DN40		535,72
* DRST332000	2"	T	350	RS 3/T DN50		629,27



* A RICHIESTA - ON REQUEST - AUF ANFRAGE
ACCIAIO - STEEL - STAHL

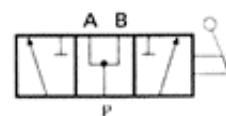
MONTAGGIO IN LINEA
LINE MOUNTING - REIHENMONTAGE

VALVOLE DIREZIONALI
HYDRAULIC DIRECTIONAL CONTROL VALVES
HYDRAULIKWEGEVENTILE

DEVIATORE A 3 VIE
3-WAY FLOW DEFLECT VALVE
3-WEGE UMSCHALTHAHN

DDF3-A

CODICE Code Bestell-Nr.	Filetto Thread Gewinde	Q Max l/min.	P Max bar	TIPO Type Typ	Kg.	EURO
CENTRO APERTO - OPEN CENTRE - OFFENE RUHESTELLUNG						
V70367.A00600	3/8"	60	315	DDF3-A 020	0,89	33,04
V70367.A00800	1/2"	90	280	DDF3-A 030	1,43	38,33
V70367.A01200	3/4"	120	250	DDF3-A 040	1,83	48,23
V70367.A01600	1"	180	250	DDF3-A 050	2,51	61,59
V70367.A02400	1.1/2"	280	200	DDF3-A 070	6,10	180,90



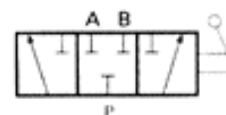
MONTAGGIO IN LINEA
LINE MOUNTING - REIHENMONTAGE

GHISA - CAST IRON - GUSS

DEVIATORE A 3 VIE
3-WAY FLOW DEFLECT VALVE
3-WEGE UMSCHALTHAHN

DDF3-C

CODICE Code Bestell-Nr.	Filetto Thread Gewinde	Q Max l/min.	P Max bar	TIPO Type Typ	Kg.	EURO
CENTRO CHIUSO - CLOSED CENTRE - GESCHLOSSENE RUHESTELLUNG						
V70367.C00600	3/8"	60	315	DDF3-C 020	0,89	33,04
V70367.C00800	1/2"	90	280	DDF3-C 030	1,46	38,33
V70367.C01200	3/4"	120	250	DDF3-C 040	1,83	48,23
V70367.C01600	1"	180	250	DDF3-C 050	2,53	61,59
*V70367.C02400	1.1/2"	280	200	DDF3-C 070	6,20	180,90



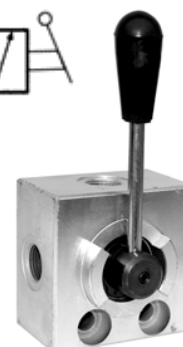
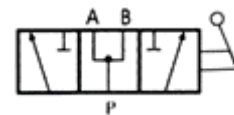
MONTAGGIO IN LINEA
LINE MOUNTING - REIHENMONTAGE

* A RICHIESTA - ON REQUEST - AUF ANFRAGE
GHISA - CAST IRON - GUSS

DEVIATORE A 3 VIE
3-WAY FLOW DEFLECT VALVE
3-WEGE UMSCHALTHAHN

DDF3 AP...A

CODICE Code Bestell-Nr.	Filetto Thread Gewinde	Q Max l/min.	P Max bar	TIPO Type Typ	Kg.	EURO
CENTRO APERTO - OPEN CENTRE - OFFENE RUHESTELLUNG						
ALTA PRESSIONE - HIGH PRESSURE - HOCHDRUCK						
V71367.A00600	3/8"	60	450	DDF3 AP 020 A	1,40	62,42
V71367.A00800	1/2"	90	400	DDF3 AP 030 A	2,28	78,82
V71367.A01200	3/4"	120	350	DDF3 AP 040 A	2,90	91,26
V71367.A01600	1"	180	350	DDF3 AP 050 A	4,70	108,20



MONTAGGIO IN LINEA
LINE MOUNTING - REIHENMONTAGE

GHISA - CAST IRON - GUSS

VALVOLE DIREZIONALI
HYDRAULIC DIRECTIONAL CONTROL VALVES
HYDRAULIKWEGEVENTILE

DEVIATORE A 3 VIE
3-WAY FLOW DEFLECT VALVE
3-WEGE UMSCHALTHAHN

DDF3 AP...C

CODICE Code Bestell-Nr.	Filetto Thread Gewinde	Q Max l/min.	P Max bar	TIPO Type Typ	Kg.	EURO
CENTRO CHIUSO - CLOSED CENTRE - GESCHLOSSENE RUHESTELLUNG						
ALTA PRESSIONE - HIGH PRESSURE - HOCHDRUCK						
V71367.C00600	3/8"	60	450	DDF3 AP 020 C	1,41	62,42
V71367.C00800	1/2"	90	400	DDF3 AP 030 C	2,30	78,82
V71367.C01200	3/4"	120	350	DDF3 AP 040 C	3,00	91,26
V71367.C01600	1"	180	350	DDF3 AP 050 C	4,80	108,20



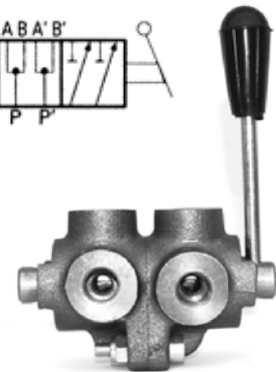
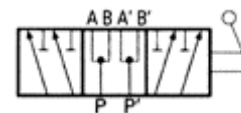
MONTAGGIO IN LINEA
LINE MOUNTING - REIHENMONTAGE

GHISA - CAST IRON - GUSS

DEVIATORE A 6 VIE
6-WAY FLOW DEFLECT VALVE
6-WEGE UMSCHALTHAHN

DDF6-A

CODICE Code Bestell-Nr.	Filetto Thread Gewinde	Q Max l/min.	P Max bar	TIPO Type Typ	Kg.	EURO
CENTRO APERTO - OPEN CENTRE - OFFENE RUHESTELLUNG						
V70667.A00600	3/8"	60	315	DDF6-A 020	1,78	68,50
V70667.A00800	1/2"	90	280	DDF6-A 030	2,88	80,11
V70667.A01200	3/4"	120	250	DDF6-A 040	3,69	98,84
V70667.A01600	1"	180	250	DDF6-A 050	5,85	137,83



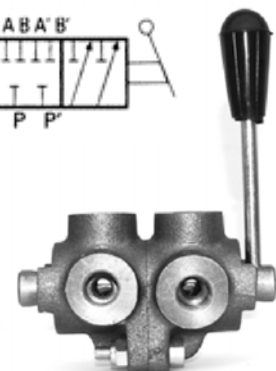
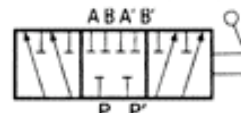
MONTAGGIO IN LINEA
LINE MOUNTING - REIHENMONTAGE

GHISA - CAST IRON - GUSS

DEVIATORE A 6 VIE
6-WAY FLOW DEFLECT VALVE
6-WEGE UMSCHALTHAHN

DDF6-C

CODICE Code Bestell-Nr.	Filetto Thread Gewinde	Q Max l/min.	P Max bar	TIPO Type Typ	Kg.	EURO
CENTRO CHIUSO - CLOSED CENTRE - GESCHLOSSENE RUHESTELLUNG						
V70667.C00600	3/8"	60	315	DDF6-C 020	1,75	68,50
V70667.C00800	1/2"	90	280	DDF6-C 030	2,96	80,11
V70667.C01200	3/4"	120	250	DDF6-C 040	3,72	98,84
V70667.C01600	1"	180	250	DF6-C 050	5,13	137,83



MONTAGGIO IN LINEA
LINE MOUNTING - REIHENMONTAGE

GHISA - CAST IRON - GUSS

VALVOLE DIREZIONALI

HYDRAULIC DIRECTIONAL CONTROL VALVES

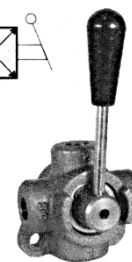
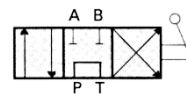
HYDRAULIKWEGEVENTILE

INVERTITORE A 4 VIE

4-WAY FLOW REVERSE - 4-WEGE UMSCHALTHAHN

IDF4-A

CODICE Code Bestell-Nr.	Filetto Thread Gewinde	Q Max l/min.	P Max bar	TIPO Type Typ	Kg.	EURO
CENTRO APERTO - OPEN CENTRE - OFFENE RUHESTELLUNG						
V70467.A00600	3/8"	35	250	IDF4-A 020	1,25	45,24
V70467.A00800	1/2"	50	250	IDF4-A 030	1,89	51,60
V70467.A01200	3/4"	90	220	IDF4-A 040	2,52	71,29



MONTAGGIO IN LINEA
LINE MOUNTING - REIHENMONTAGE

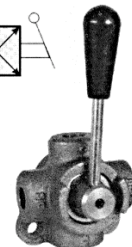
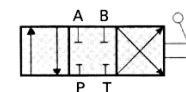
GHISA - CAST IRON - GUSS

INVERTITORE A 4 VIE

4-WAY FLOW REVERSE - 4-WEGE UMSCHALTHAHN

IDF4-C

CODICE Code Bestell-Nr.	Filetto Thread Gewinde	Q Max l/min.	P Max bar	TIPO Type Typ	Kg.	EURO
CENTRO CHIUSO - CLOSED CENTRE - GESCHLOSSENE RUHESTELLUNG						
V70467.C00600	3/8"	35	250	IDF4-C 020	1,25	45,24
V70467.C00800	1/2"	50	250	IDF4-C 030	1,84	51,60
V70467.C01200	3/4"	90	220	IDF4-C 040	2,50	71,29



MONTAGGIO IN LINEA
LINE MOUNTING - REIHENMONTAGE

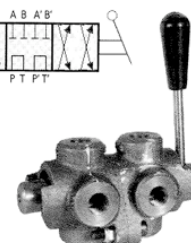
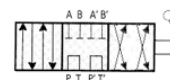
GHISA - CAST IRON - GUSS

INVERTITORE A 8 VIE

8-WAY FLOW REVERSE - 8-WEGE UMSCHALTHAHN

IDF8-A

CODICE Code Bestell-Nr.	Filetto Thread Gewinde	Q Max l/min.	P Max bar	TIPO Type Typ	Kg.	EURO
CENTRO APERTO - OPEN CENTRE - OFFENE RUHESTELLUNG						
V70867.A00600	3/8"	35	250	IDF8-A 020	2,50	91,60
V70867.A00800	1/2"	50	250	IDF8-A 030	3,74	103,67
V70867.A01200	3/4"	90	220	IDF8-A 040	5,00	144,57



MONTAGGIO IN LINEA
LINE MOUNTING - REIHENMONTAGE

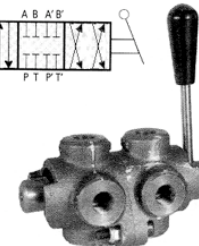
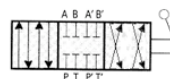
GHISA - CAST IRON - GUSS

INVERTITORE A 8 VIE

8-WAY FLOW REVERSE - 8-WEGE UMSCHALTHAHN

IDF8-C

CODICE Code Bestell-Nr.	Filetto Thread Gewinde	Q Max l/min.	P Max bar	TIPO Type Typ	Kg.	EURO
CENTRO CHIUSO - CLOSED CENTRE - GESCHLOSSENE RUHESTELLUNG						
V70867.C00600	3/8"	35	250	IDF8-C 020	2,49	91,60
V70867.C00800	1/2"	50	250	IDF8-C 030	3,77	103,67
V70867.C01200	3/4"	90	220	IDF8-C 040	5,07	144,57



MONTAGGIO IN LINEA
LINE MOUNTING - REIHENMONTAGE

GHISA - CAST IRON - GUSS