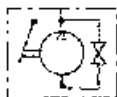
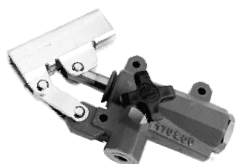


POMPE
PUMPS
PUMPEN

POMPE A MANO
HAND PUMPS
HANDPUMPEN

PAM

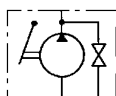
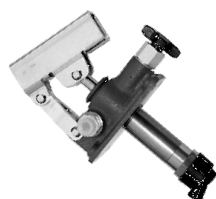
NON PREDISPOSTA PER SERBATOIO - NOT SUITABLE FOR OIL TANK - OHNE TANKEINRICHTUNG



CODICE Code Bestell-Nr.	TIPO Type Typ	cm ³ /ciclo cm ³ /cycle cm ³ /Hub	P. MAX bar	Kg.	EURO
PAM0142000	PAM 20	20	350	2,75	114,27
PAM0144000	PAM 40	40	280	3,65	130,87
PAM0290000	LEVA - Hand lever - Hebel 20x30x600			0,86	9,15

PAM-T

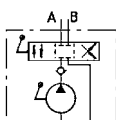
PREDISPOSTA PER SERBATOIO - SUITABLE FOR OIL TANK - MIT TANKEINRICHTUNG



CODICE Code Bestell-Nr.	TIPO Type Typ	cm ³ /ciclo cm ³ /cycle cm ³ /Hub	P. MAX bar	Kg.	EURO
PAM0141200	PAM-T 12	12	380	2,85	118,99
PAM0142500	PAM-T 25	25	350	2,95	120,97
PAM0144500	PAM-T 45	45	280	3,15	124,16
PAM0290000	LEVA - Hand lever - Hebel 20x30x600			0,86	9,15

PAM-TD

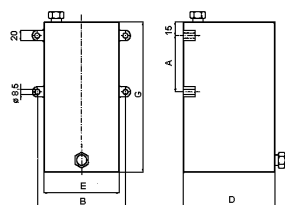
PREDISPOSTA PER SERBATOIO - SUITABLE FOR OIL TANK - MIT TANKEINRICHTUNG



- CON DEVIATORE A 4 VIE
- WITH 4-WAY DIVERTER
- MIT 4 WEGE-VENTIL

CODICE Code Bestell-Nr.	TIPO Type Typ	cm ³ /ciclo cm ³ /cycle cm ³ /Hub	P. MAX bar	Kg.	EURO
PAM0151200	PAM-TD 12	12	380	2,85	132,39
PAM0152500	PAM-TD 25	25	350	2,95	136,69
PAM0154500	PAM-TD 45	45	280	3,15	140,67
PAM0290000	LEVA - Hand lever - Hebel 20x30x600			0,86	9,15
Maggiorazione per - Extra cost for - Mehrpreis				Type	EURO
Soffietto - Bellow - Faltenbalg				S	6,43
Valvola max pressione incorporata Bult-in pressure relief valve Mit Druckbegrenzungsventil				V	10,35

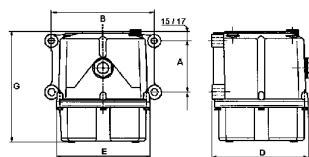
SERBATOIO PER POMPE A MANO
TANK FOR HAND PUMPS
TANK FÜR HANDPUMPEN



ACCIAIO - STEEL - STAHL

CODICE Code Bestell-Nr.	CAPACITA' Capacity Inhalt	DIMENSIONI (mm) Dimensions - Abmessungen					Montaggio Mounting Montage	Kg.	EURO
		A	B	D	E	G			
PM00220001	lt. 1	90	120	150	100	120	N°4 fori holes Bohrungen ø 8,5 mm	2,0	39,15
PM00220002	lt. 2	90	120	150	100	180		2,2	43,49
PM00220003	lt. 3	90	120	150	100	247		2,5	47,99
PM00220005	lt. 5	90	195	175	175	200		4,5	54,22
PM00220007	lt. 7	90	195	175	175	269		5,4	62,20
PM00220010	lt. 10	90	195	175	175	376		6,8	74,13

ALLUMINIO - ALUMINIUM - ALUMINIUM



PMSR 02 - PMSR 03 - PMSR 05

CODICE Code Bestell-Nr.	CAPACITA' Capacity Inhalt	DIMENSIONI (mm) Dimensions - Abmessungen					Montaggio Mounting Montage	Kg.	EURO
		A	B	D	E	G			
PMSR01AL00	lt. 1	110	96	130	123	150	N°4 fori holes Bohrungen ø 10,5 mm	1,0	73,70
PMSR02AL00	lt. 2	90	180	168	164	150		1,5	82,16
PMSR03AL00	lt. 3	90	180	168	164	195		1,6	86,99
PMSR05AL00	lt. 5	90	180	168	164	305		1,8	94,24