

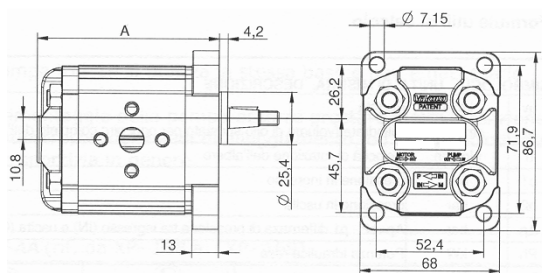
**POMPE
PUMPS
PUMPEN**

**POMPA AD INGRANAGGI
GEAR PUMP
ZAHNRADPUMPEN**

XV-1P

**POMPA STANDARD EUROPEA
BASE Ø 25,4 - ALBERO CONICO 1:8
STANDARD EUROPEAN PUMP
Ø 25,4 FLANGE - 1:8 TAPER SHAFT
EUROPÄISCHE STANDARDPUMPE
FLANSCH Ø 25,4 - KEGELWELLE 1:8**

- *1 rotazione a sinistra / anticlockwise / Linksdrehung
*2 rotazione a destra / clockwise / Rechtsdrehung



CODICE Code Bestell-Nr.	TIPO Type Typ	cm ³ /giro cm ³ /rev cm ³ /U	A	P MAX bar		MAX giri/min. MAX. rpm MAX. U/min	MIN giri/min. MIN. rpm MIN. U/min	Aspirazione Intake Saugseite	Mandata Delivery Druckseite	Kg.	EURO
				P1	P3						
1P160*FIIA	XV 1P/ 0,9	0,91	78,1	240	280	6000	700	Ø30x13xM6	Ø30x13xM6	0,95	168,50
1P170*FIIA	XV 1P/ 1,2	1,17	79,0	250	290	6000	700	Ø30x13xM6	Ø30x13xM6	0,97	168,50
1P180*FIIA	XV 1P/ 1,7	1,56	80,5	250	290	6000	700	Ø30x13xM6	Ø30x13xM6	1,01	168,50
1P200*FIIA	XV 1P/ 2,2	2,08	82,5	250	290	6000	700	Ø30x13xM6	Ø30x13xM6	1,03	168,50
1P210*FIIA	XV 1P/ 2,6	2,6	84,5	250	300	6000	700	Ø30x13xM6	Ø30x13xM6	1,06	168,50
1P230*FIIA	XV 1P/ 3,2	3,12	86,5	250	300	6000	700	Ø30x13xM6	Ø30x13xM6	1,09	168,50
1P250*FIIA	XV 1P/ 3,8	3,64	88,5	250	300	6000	700	Ø30x13xM6	Ø30x13xM6	1,12	168,50
1P270*FIIA	XV 1P/ 4,3	4,16	90,5	250	300	6000	700	Ø30x13xM6	Ø30x13xM6	1,17	168,50
1P290*FIIA	XV 1P/ 4,9	4,94	93,5	250	300	6000	700	Ø30x13xM6	Ø30x13xM6	1,20	179,16
1P310*FIIA	XV 1P/ 5,9	5,85	97,0	250	300	5000	700	Ø30x13xM6	Ø30x13xM6	1,26	179,16
1P320*FIIA	XV 1P/ 6,5	6,5	98,5	250	300	5000	700	Ø30x13xM6	Ø30x13xM6	1,30	179,16
1P340*FIIA	XV 1P/ 7,8	7,54	103,5	220	260	5000	700	Ø30x13xM6	Ø30x13xM6	1,36	179,16
1P360*FIIA	XV 1P/ 9,8	9,88	112,5	190	230	4000	700	Ø30x13xM6	Ø30x13xM6	1,50	179,16

P1 = PRESSIONE MAX. DI ESERCIZIO - MAX. WORKING PRESSURE - MAX BETRIEBSDRUCK

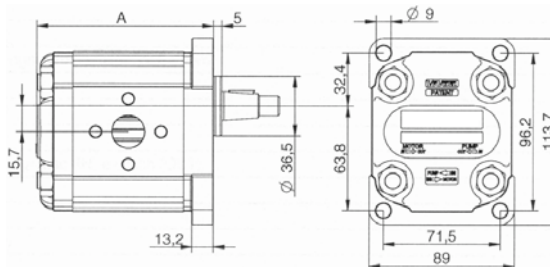
P3 = PRESSIONE MAX. DI PUNTA - MAX. PEAK PRESSURE - HÖCHSTDRUCK

A RICHIESTA - ON REQUEST - AUF ANFRAGE: CORPO FILETTATO "BSPP" - "BSPP" THREADED HOUSING - GEHÄUSE MIT GEWINDE "BSPP"

XV-2P

**POMPA STANDARD EUROPEA
BASE Ø 36,5 - ALBERO CONICO 1:8
STANDARD EUROPEAN PUMP
Ø 36,5 FLANGE - 1:8 TAPER SHAFT
EUROPÄISCHE STANDARDPUMPE
FLANSCH Ø 36,5 - KEGELWELLE 1:8**

- *1 rotazione a sinistra / anticlockwise / Linksdrehung
*2 rotazione a destra / clockwise / Rechtsdrehung



CODICE Code Bestell-Nr.	TIPO Type Typ	cm ³ /giro cm ³ /rev cm ³ /U	A	P MAX bar		MAX giri/min. MAX. rpm MAX. U/min	MIN giri/min. MIN. rpm MIN. U/min	Aspirazione Intake Saugseite	Mandata Delivery Druckseite	Kg.	EURO
				P1	P3						
2P410*E00A	XV 2P/ 4	4,2	87,2	260	300	3500	700	Ø30x13xM6	Ø30x13xM6	2,20	214,37
2P430*E00A	XV 2P/ 6	6,0	90,2	260	300	3500	700	Ø30x13xM6	Ø30x13xM6	2,30	214,37
2P450*E00A	XV 2P/ 9	8,4	94,2	260	300	3500	700	Ø30x13xM6	Ø30x13xM6	2,40	214,37
2P470*E00A	XV 2P/ 11	10,8	98,2	260	300	3500	700	Ø30x13xM6	Ø30x13xM6	2,50	214,37
2P490*EPOA	XV 2P/ 14	14,4	104,2	250	290	3500	700	Ø40x20xM8	Ø30x13xM6	2,70	219,71
2P510*EPOA	XV 2P/ 17	16,8	108,2	230	270	3500	700	Ø40x20xM8	Ø30x13xM6	2,80	219,71
2P530*EPOA	XV 2P/ 19	19,2	112,2	210	250	3000	700	Ø40x20xM8	Ø30x13xM6	2,90	230,35
2P550*EPOA	XV 2P/ 22	22,8	118,2	200	240	3000	700	Ø40x20xM8	Ø30x13xM6	3,05	230,35
2P570*EQPA	XV 2P/ 26	26,2	122,2	170	210	3000	700	Ø40x23xM8	Ø40x20xM8	3,15	230,35
2P590*EQPA	XV 2P/ 30	30,0	130,2	160	200	2500	700	Ø40x23xM8	Ø40x20xM8	3,40	254,90
2P610*EQPA	XV 2P/ 34	34,2	137,2	150	190	2500	700	Ø40x23xM8	Ø40x20xM8	3,60	254,90
2P630*EQPA	XV 2P/ 40	39,6	146,2	140	180	2000	700	Ø40x23xM8	Ø40x20xM8	3,80	254,90

P1 = PRESSIONE MAX. DI ESERCIZIO - MAX. WORKING PRESSURE - MAX BETRIEBSDRUCK

P3 = PRESSIONE MAX. DI PUNTA - MAX. PEAK PRESSURE - HÖCHSTDRUCK

A RICHIESTA - ON REQUEST - AUF ANFRAGE: CORPO FILETTATO "BSPP" - "BSPP" THREADED HOUSING - GEHÄUSE MIT GEWINDE "BSPP"

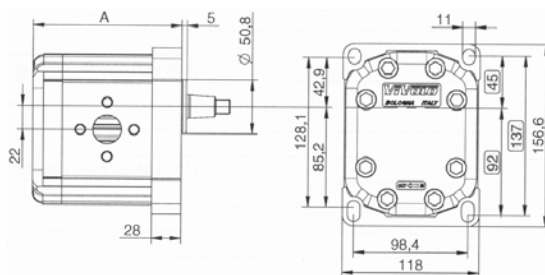
**A RICHIESTA - ON REQUEST - AUF ANFRAGE : POMPE PER MINICENTRALINE, POMPE UNIFICAZIONE TEDESCA, POMPE TIPO "SAE"
PUMPS FOR MINI POWER PACK, GERMAN STANDARDIZED PUMPS, "SAE" TYPE PUMPS
PUMPEN FÜR MINIAGGREGATE, DEUTSCHE STANDARDPUMPEN, PUMPEN TYP "SAE"**

POMPE
PUMPS
PUMPEN

POMPA AD INGRANAGGI
GEAR PUMP
ZAHNRADPUMPEN

XV-3P

POMPA STANDARD EUROPEA
BASE Ø 50,8
ALBERO CONICO 1:8
STANDARD EUROPEAN PUMP
Ø 50,8 FLANGE - 1:8 TAPER SHAFT
EUROPÄISCHE STANDARDPUMPE
FLANSCH Ø 50,8 - KEGELWELLE 1:8



- *1 rotazione a sinistra / anticlockwise / Linksdrehung
*2 rotazione a destra / clockwise / Rechtsdrehung

CODICE Code Bestell-Nr.	TIPO Type Typ	cm ³ /giro cm ³ /rev cm ³ /U	A	P MAX bar		MAX giri/min. MAX. rpm MAX. U/min	MIN giri/min. MIN. rpm MIN. U/min	Aspirazione Intake Saugseite	Mandata Delivery Druckseite	Kg.	EURO
				P1	P3						
3P660*AAAA	XV-3P/15	14,89	122,0	300	320	3000	700	Ø40x20xM8	Ø40x20xM8	7,01	517,99
3P680*AAAA	XV-3P/18	17,37	124,0	300	320	3000	700	Ø40x20xM8	Ø40x20xM8	7,07	517,99
3P700*AAAA	XV-3P/21	21,10	127,0	280	300	3000	700	Ø40x20xM8	Ø40x20xM8	7,15	529,11
3P720*AAAA	XV-3P/27	26,97	131,0	250	270	3000	700	Ø40x20xM8	Ø40x20xM8	7,25	529,11
3P740*ABBA	XV-3P/32	32,27	136,0	250	270	3000	700	Ø51x27xM10	Ø51x27xM10	7,39	529,11
3P780*ABBA	XV-3P/38	38,47	141,0	250	270	2800	700	Ø51x27xM10	Ø51x27xM10	7,52	548,34
3P790*ABBA	XV-3P/43	43,44	145,0	250	270	2800	700	Ø51x27xM10	Ø51x27xM10	7,63	548,34
3P800*ABBA	XV-3P/47	47,16	148,0	230	250	2800	700	Ø51x27xM10	Ø51x27xM10	7,71	548,34
3P810*ABBA	XV-3P/51	50,88	151,0	230	250	2800	700	Ø51x27xM10	Ø51x27xM10	7,79	566,53
3P820*ABBA	XV-3P/54	54,60	154,0	230	250	2300	700	Ø51x27xM10	Ø51x27xM10	7,87	566,53
3P830*ACCA	XV-3P/61	60,81	159,0	230	250	2300	700	Ø62x36xM10	Ø62x36xM10	8,01	566,53
3P850*ACCA	XV-3P/64	64,53	162,0	210	230	2300	700	Ø62x36xM10	Ø62x36xM10	8,09	566,53
3P860*ACCA	XV-3P/70	70,74	167,0	200	220	2300	700	Ø62x36xM10	Ø62x36xM10	8,22	591,06
3P870*ACCA	XV-3P/74	74,46	170,0	180	200	2300	700	Ø62x36xM10	Ø62x36xM10	8,30	591,06
3P890*ACCA	XV-3P/90	86,87	180,0	150	170	2300	700	Ø62x36xM10	Ø62x36xM10	8,57	591,06

P1 = PRESSIONE MAX. DI ESERCIZIO - MAX. WORKING PRESSURE - MAX BETRIEBSDRUCK

P3 = PRESSIONE MAX. DI PUNTA - MAX. PEAK PRESSURE - HÖCHSTDRUCK

A RICHIESTA - ON REQUEST - AUF ANFRAGE: CORPO FILETTATO "BSP" - "BSP" THREADED HOUSING - GEHÄUSE MIT GEWINDE "BSP"

FLANGETTE 90° PER POMPA INGRANAGGI
90° ELBOW CONNECTOR FOR GEAR PUMP
90° WINKELSTUTZEN FÜR ZAHNRADPUMPE



ACCIAIO - STEEL - STAHL

CODICE Code Bestell-Nr.	B	F1	D	O-RING	Kg.	EURO
AFRG026060	26	3/8"	12	015	0,14	8,15
AFRG026080	26	1/2"	12	015	0,13	8,15
AFRG030060	30	3/8"	13,5	809	0,15	7,40
AFRG030080	30	1/2"	13,5	809	0,14	7,40
AFRG040080	40	1/2"	20	814	0,32	10,59
AFRG040120	40	3/4"	20	814	0,28	10,59
AFRG040121	40	3/4"	23,5	022	0,28	18,13
AFRG051120	51	3/4"	27	217	0,60	18,62
AFRG051160	51	1"	27	217	0,51	18,62
AFRG056160	56	1"	34	217	0,52	18,62
AFRG062200	62	1.1/4"	36	222	1,03	34,42
AFRG072240	72	1.1/2"	45	830	1,07	36,43

TIPO BOSCH - BOSCH TYPE - BOSCH TYP

CODICE Code Bestell-Nr.	B	F1	D	O-RING	Kg.	EURO
ALLUMINIO - ALUMINIUM						
AFRB030060	30	3/8"	13,5	809	0,10	6,64
AFRB030080	30	1/2"	13,5	809	0,09	6,64
AFRB035060	35	3/8"	17	116	0,11	7,52
AFRB035080	35	1/2"	17	116	0,11	7,52
AFRB040080	40	1/2"	19	812	0,18	11,35
AFRB040120	40	3/4"	19	812	0,17	11,35
ACCIAIO - STEEL - STAHL						
AFRGB35060	35	3/8"	15	116	0,29	13,41
AFRGB35080	35	1/2"	15	116	0,27	13,41
AFRGB40080	40	1/2"	20	813	0,36	16,31
AFRGB40120	40	3/4"	20	813	0,35	16,31