

VALVOLE OLEODINAMICHE

HYDRAULIC VALVES

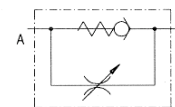
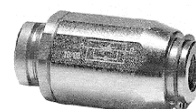
HYDRAULIKVENTILE

VALVOLA DI STROZZAMENTO REGOLABILE

ADJUSTABLE THROTTLE-CHECK VALVE - DROSSEL-RÜCKSCHLAGVENTIL

VRFC

CODICE Code Bestell-Nr.	Filetto Thread Gewinde	Q Max l/min.	P Max bar	TIPO Type Typ	Kg.	EURO
TENUTA A CONO - POPPET TYPE - KEGELSPERRUNG						
VSG512.100000	1/4"	25	350	VRFC 010	0,30	21,39
VSG512.200000	3/8"	45	350	VRFC 020	0,48	25,26
VSG512.300000	1/2"	70	350	VRFC 030	0,59	29,42
VSG512.400000	3/4"	110	300	VRFC 040	1,34	50,81
VSG512.500000	1"	160	250	VRFC 050	2,15	111,99
VSG512.600000	1.1/4"	210	230	VRFC 060	3,31	178,74
VSG512.700000	1.1/2"	280	230	VRFC 070	4,76	232,59



UNIDIREZIONALE
UNIDIRECTIONAL - EINSEITIG GERICHTET
MONTAGGIO IN LINEA
LINE MOUNTING - REIHENMONTAGE

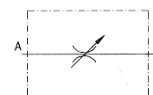
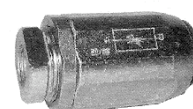
ACCIAIO - STEEL - STAHL

VALVOLA DI STROZZAMENTO REGOLABILE

ADJUSTABLE THROTTLE-CHECK VALVE - DROSSEL-RÜCKSCHLAGVENTIL

VRB

CODICE Code Bestell-Nr.	Filetto Thread Gewinde	Q Max l/min.	P Max bar	TIPO Type Typ	Kg.	EURO
VSG515.100000	1/4"	15	350	VRB 010	0,30	17,89
VSG515.200000	3/8"	30	350	VRB 020	0,47	21,56
VSG515.300000	1/2"	45	350	VRB 030	0,58	26,51
VSG515.400000	3/4"	80	300	VRB 040	1,35	56,22
VSG515.500000	1"	150	230	VRB 050	2,15	100,79



BIDIREZIONALE
BIDIRECTIONAL - ZWEISEITIG GERICHTET
MONTAGGIO IN LINEA
LINE MOUNTING - REIHENMONTAGE

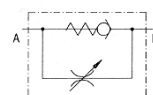
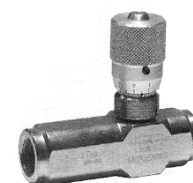
ACCIAIO - STEEL - STAHL

REGOLATORE DI FLUSSO

FLOW CONTROL VALVE - NAELDROSSEL-RÜCKSCHLAGVENTIL

VRFU 90

CODICE Code Bestell-Nr.	Filetto Thread Gewinde	Q Max l/min.	P Max bar	TIPO Type Typ	Kg.	EURO
TENUTA A CONO - POPPET TYPE - KEGELSPERRUNG						
VSG521.100000	1/4"	15	350	VRFU90 010	0,42	34,46
VSG521.200000	3/8"	30	350	VRFU90 020	0,41	35,37
VSG521.300000	1/2"	45	350	VRFU90 030	0,59	40,08
VSG521.400000	3/4"	60	280	VRFU90 040	1,37	77,53



UNIDIREZIONALE
UNIDIRECTIONAL - EINSEITIG GERICHTET
MONTAGGIO IN LINEA
LINE MOUNTING - REIHENMONTAGE

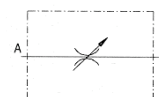
ACCIAIO - STEEL - STAHL

REGOLATORE DI FLUSSO

FLOW CONTROL VALVE - NAELDROSSEL-RÜCKSCHLAGVENTIL

VRFB 90

CODICE Code Bestell-Nr.	Filetto Thread Gewinde	Q Max l/min.	P Max bar	TIPO Type Typ	Kg.	EURO
VSG522.100000	1/4"	15	350	VRFB90 010	0,36	27,97
VSG522.200000	3/8"	30	350	VRFB90 020	0,34	29,46
VSG522.300000	1/2"	45	350	VRFB90 030	0,43	31,42
VSG522.400000	3/4"	80	280	VRFB90 040	1,10	59,89



BIDIREZIONALE
BIDIRECTIONAL - ZWEISEITIG GERICHTET
MONTAGGIO IN LINEA
LINE MOUNTING - REIHENMONTAGE

ACCIAIO - STEEL - STAHL

VALVOLE OLEODINAMICHE

HYDRAULIC VALVES

HYDRAULIKVENTILE

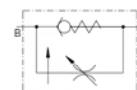
REGOLATORE DI FLUSSO COMPENSATO

COMPENSATED FLOW CONTROL VALVE - DROSSEL-RÜCKSCHLAGVENTIL - DRUCKKOMPENSIERT

VRFU 90-C

CODICE Code Bestell-Nr.	Filetto Thread Gewinde	Q Max l/min.	P Max bar	TIPO Type Typ	Kg.	EURO
TENUTA A CONO - POPPET TYPE - KEGELSPERRUNG						
VSG523.1C0000	1/4"	15	250	VRFU90-C 010	0,42	58,51
VSG523.2C0000	3/8"	15	250	VRFU90-C 020	0,42	59,55

Q Max. B---> A = 25 l/min



UNIDIREZIONALE
UNIDIRECTIONAL - EINSEITIG GERICHTET
MONTAGGIO IN LINEA
LINE MOUNTING - REIHENMONTAGE

ACCIAIO - STEEL - STAHL

VALVOLA DI RALLENTAMENTO REGOLABILE

ADJUSTABLE DESCENT CONTROL VALVE - DROSSEL-SENKVENTIL

VRD

CODICE Code Bestell-Nr.	Filetto Thread Gewinde	Q Max l/min.	P Max bar	TIPO Type Typ	Kg. x 100	EURO
VCG501.100X00	1/4"		300	VRD 010-X	2,00	44,03
VCG501.200X00	3/8"		300	VRD 020-X	3,00	44,03
VCG501.300X00	1/2"		300	VRD 030-X	4,00	53,77
VCG501.400X00	3/4"		300	VRD 040-X	8,00	68,46

X = Campo di Portata - Flow Range - Durchflußbereich
l/min. (50 bar)

"X" per VRD 010	1=(1,0-1,6)	2=(1,6-2,5)	3=(2,5-4,0)	4=(4,0-6,3)	5=(6,3-10)
"X" per VRD 020	1=(2,5-4,0)	2=(4,0-6,3)	3=(6,3-10)	4=(10-16)	5=(16-25)
"X" per VRD 030	1=(16-21)	2=(21-28)	3=(28-37)	4=(37-50)	5=(50-67)
"X" per VRD 040	1=(37-50)	2=(50-67)	3=(67-90)	4=(90-120)	5=(120-150)

COLLETTORE - VALVE ADAPTER - GEHÄUSE: VEDI PAG. 22 - SEE PAGE 22 - SIEHE SEITE 22

ACCIAIO - STEEL - STAHL



CARTUCCIA - CARTRIDGE - PATRONE

VALVOLA DI RALLENTAMENTO

DESCENT CONTROL VALVE - SENKVENTIL

VSC

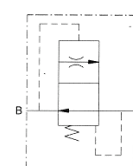
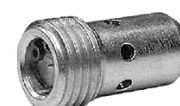
CODICE Code Bestell-Nr.	Filetto Thread Gewinde	Q Max l/min.	P Max bar	TIPO Type Typ	Kg. x 100	EURO
VCG505.10X000	1/4"		350	VSC 010-X	1,00	10,53
VCG505.20X000	3/8"		350	VSC 020-X	1,00	12,48

X = Portata Nominale - Nominal Flow - Nenndurchfluß
l/min. (50 bar)

"X" per VSC010: A= 1 - B= 2 - C= 3 - D= 4 - E= 5 - F= 6 - G= 7 - H= 8 - I= 9 - L=10
"X" per VSC020: A= 2 - B= 4 - C= 6 - D= 8 - E=10 - F=12 - G=14 - H=16

COLLETTORE - VALVE ADAPTER - GEHÄUSE: VEDI PAG. 22 - SEE PAGE 22 - SIEHE SEITE 22

ACCIAIO - STEEL - STAHL



CARTUCCIA - CARTRIDGE - PATRONE

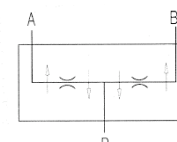
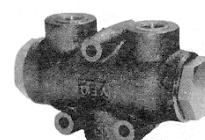
DIVISORE DI FLUSSO

FLOW DIVIDER - STROMTEILER

VEQ

CODICE Code Bestell-Nr.	Filetto Thread Gewinde	Q Max l/min.	P Max bar	TIPO Type Typ	Kg.	EURO
V3615.0312	3/8"	3 / 6	300	VEQ 10	1,29	210,20
V3615.0313	3/8"	6 / 10	300	VEQ 15	1,29	210,20
V3615.0314	3/8"	10/20	300	VEQ 20	1,29	210,20
V3615.0315	3/8"	20/32	300	VEQ 22	1,29	210,20
V3615.0316	1/2"	25/40	300	VEQ 25	1,27	212,98
V3615.0317	1/2"	40/60	300	VEQ 30	1,27	212,98

GHISA - CAST IRON - GUSS



MONTAGGIO IN LINEA
LINE MOUNTING - REIHENMONTAGE